

FOODPathS Festival

21 May 2025
09:00 - 17:30

WELCOME

Landing the SFS Partnership prototype into the reality

food|paths



Funded by
the European Union

**Relax with the
FOODPathS quiz!**



21.05.2025

Discussing the Partnership's puzzle pieces



Hugo De Vries

INRAE &
FOODPathS Coordinator

Welcome and opening

9.15 - 10.45 | *From prototype to reality*



Session 1.1 — A “Manual” for a Partnership (Main Room)

If you are considering setting up a partnership, or if you are active member of a partnership, and you need a guiding document (‘Manual’), this session proposes one.

Session 1.2 — Transforming funding approaches for transformative food systems R&I (Gamay Room)

Lessons learnt from the Funders Forum events and findings and ideas on how to plan, design, evaluate, fund and perform R&I to transform our food systems.

Session 1.3 — Enhancing collaboration through the Knowledge Hub (Syrah Room)

A FOODPathS-FutureFoodS joint session to explore how to build a shared European Knowledge Hub to accelerate the sustainable transformation of food systems. The session will explore ways to align efforts and join forces in developing a common space that supports collaboration, knowledge sharing, and systemic innovation across Europe.

11.15 - 12.45 | *From prototype to reality*



Session 2.1 — Portfolio management, science advice and education: what is the link? (Syrah Room)

This session will present and discuss the conceptual framework 'RIPE' with a focus on the science-to-policy interface and education.

Speakers:

- **Christian Bugge Henriksen**, CLEVERFOOD coordinator
- **Anna Verhoeve**, Flanders Research Institute for Agriculture, Fisheries and Food (ILVO)
- **Laura Borge**, EIT Food

11.15 - 12.45 | *From prototype to reality*



Session 2.2 — Inclusive Partnerships in real-life: a major challenge (Main Room)

This session will discuss the way different Food System actors are really engaged, their views are mirrored, their voices are listened to, their actions combined, and their interactions with external parties transformed into co-benefits, to collectively tackle our global & local challenges.

Speakers:

- **Wineke Remijnse**, European Federation of the Associations of Dietitians (EFAD)
- **Annie Trevenen Jones**, Global Alliance for Improved Nutrition (GAIN)
- **Samuele Pii**, European Regions for Innovation in Agriculture, Food and Forestry (ERIAFF)
- **Jacqueline Broerse**, Vrije Universiteit Amsterdam – Athena Institute
- **Almudena Garcia Sastre**, FIAN Europe

21.05.2025

From the prototype to the reality

Parallel Sessions

WE'LL BE BACK AT 14:15



Day 2: From the prototype to the reality

Parallel session 1.1:

A "Manual" for a Partnership

21.05.2025

A Manual for the Partnership

Session 1-1

21/05/2025 – **FOODpathS Festival**

Hugo De Vries, Maurine Mames (INRAE-Montpellier team) – Damien Guimond, Emmanuelle Lagendijk



What do you expect from a manual?



Scan this QR code or join directly on Slido.com with the code #Festival2025

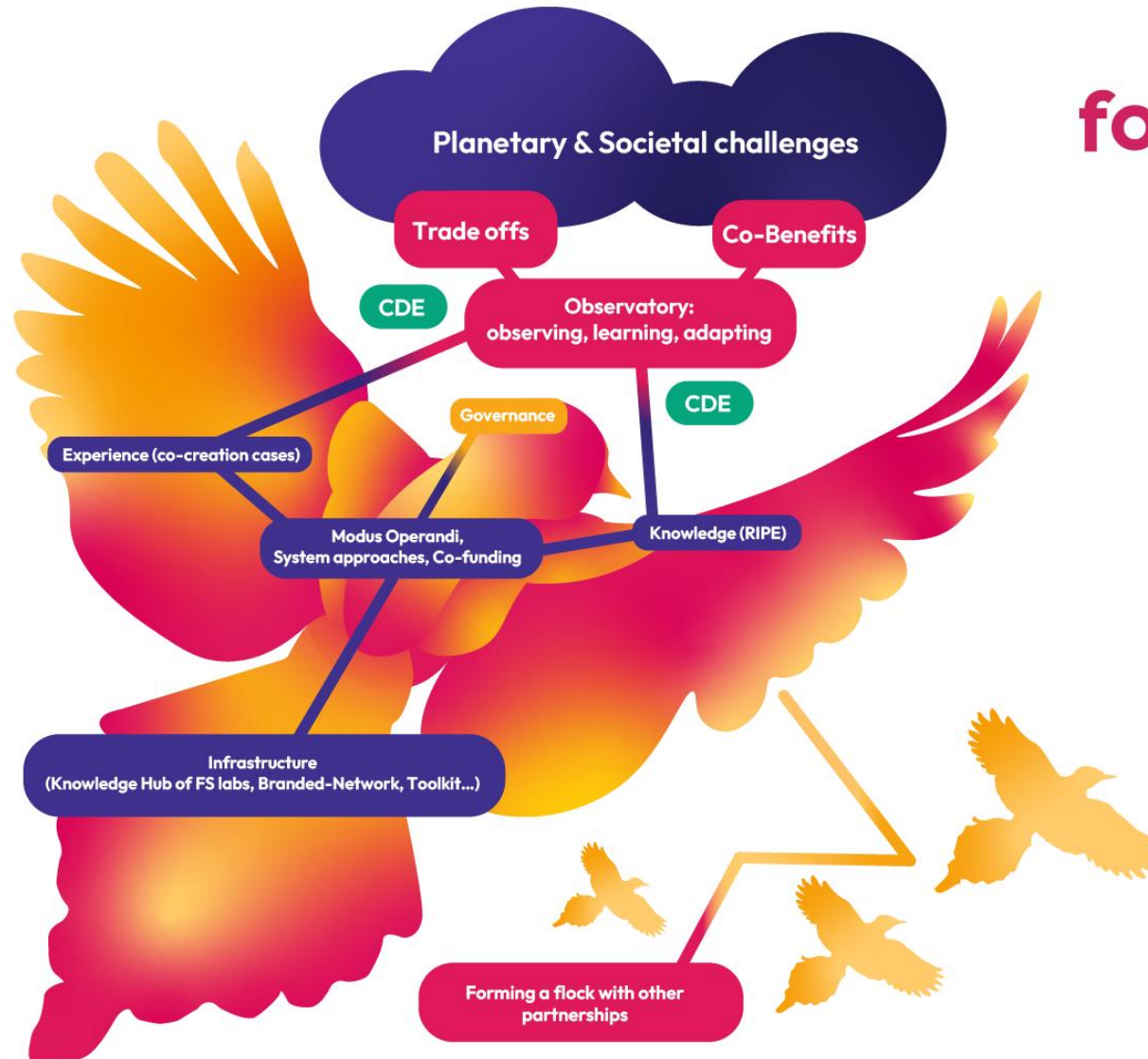
A manual for a partnership?

food|paths

food|paths

RIPE:
Research,
Innovation,
Policy,
Education

CDE:
Communication,
Dissemination,
Exploitation



Objectives of this workshop



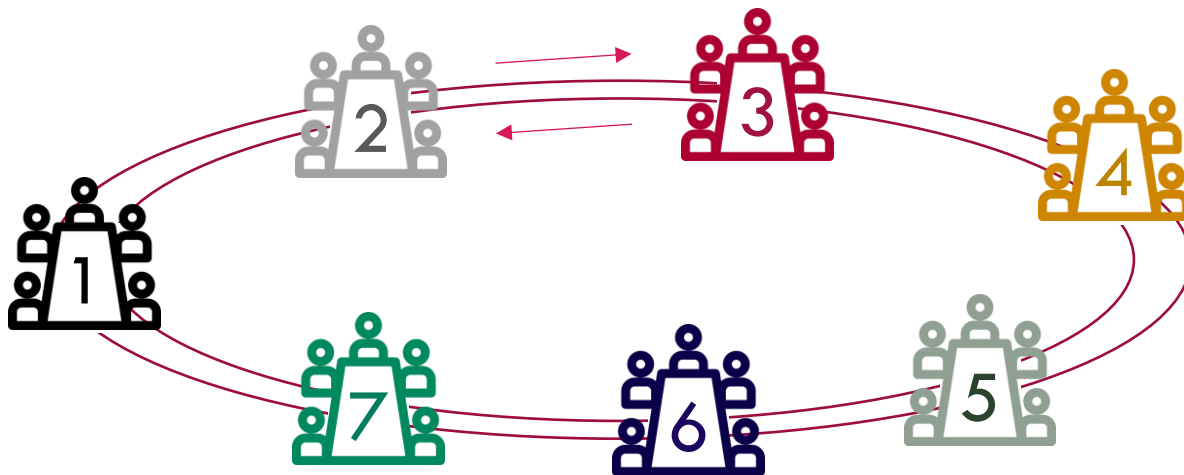
To provide:

- Feedback on the Manual structure and content
- Suggestions for missing puzzle pieces
- Recommendations for usage

3-round brain/sharing/storming discussion



- **Problematics:** Based on your experience, does the way the component is presented make sense? What should be added, changed, or removed? What important elements are missing?”
- **How it works:**
 - **3 rounds – 3 stages of discussion** (15 minutes each):
 1. **Brain-** – Quiet, individual idea generation (on post-its)
 2. **Sharing** – Speak ideas aloud (+post-its), listen to others, no debate
 3. **-Storming and consensus** – Group discussion to agree on key consolidated ideas
 - **You rotate tables each round.** Each table focuses on one of the 7 partnership components. You discuss 3 different ones, at 3 different stages.
 - **Your role:** be curious, build on others' input, and help shape a shared vision for the future Partnership.



1. Observatory
2. Governance
3. Operations
(modus operandi, system approach, co-funding)
4. Knowledge (R&I, RIPE concept, education)
5. Experience (co-creation)
6. Infrastructures (SRIA, knowledge hub, toolkit,
universities-branded network)
7. Communication

Does the manual meet your expectations?



Scan this QR code or join directly on Slido.com with the code #Festival2025

Day 2: From the prototype to the reality

Parallel session 2.2:
**Inclusive Partnerships in real-life: a
major challenge**

21.05.2025

21.05.2025

Day 2: From the prototype to the reality

Parallel Session 2.2

Inclusive Partnerships in real-life: a major challenge



Anna Bruen
ICLEI Europe



Balance Phala
ICLEI World Secretariat



Beatrice Ruggiero
ICLEI Europe



Terhi Junkkari
SeAMK



Nogaye Dieng
INRAE



Renée Van-Dis
INRAE



Sofia Mendes
EUFIC

21.05.2025

Day 2: From the prototype to the reality

Parallel Session 2.2

Inclusive Partnerships in real-life: a major challenge

Panelists



Wineke Remijnse
EFAD



Samuele Pii
ERIAFF



Almudena Garcia Sastre
FIAN Europe



Ann Trevenen-Jones
GAIN



Jacqueline Broerse
VU Amsterdam

Agenda



11.15 - 11.20 (5') Welcoming and Introduction

11.20 - 11.35 (15') Food System ID Card

11.35 - 11.45 (10') How do we create inclusive partnerships? Challenges and opportunities we have learned about

- *Mirroring Activities in FoodPathS (Anna Bruen, ICLEI ES)*
- *What interviewees have shared with us (Nogaye Dieng, INRAE)*

11.45 - 12.05 (20') Panel: how should a food system partnership function/what should it focus on?

12.05 - 12.40 (35') Fishbowl activity

12.40 - 12.45 (5') Wrap up

21.05.2025

Day 2: From the prototype to the reality

Parallel Session 2.2

Food System ID card

Food System ID Card



- 1) Each participant fills out the Food System ID Card
- 2) Introduce yourself to another person
 - A bell will ring after about 1.5 min → then pair up with a different person
- 3) Stick your ID card on the wall

The image shows a 'Food System ID Card' form. At the top left is a small 'dip' logo followed by the text 'FOOD SYSTEM ID CARD'. At the top right is the 'foodpaths' logo. The form contains several input fields: 'SURNAME', 'GIVEN NAME', 'COUNTRY', and 'CONTACT'. Below these is a larger field labeled 'I IDENTIFY IN THE FOOD SYSTEM AS....'. At the bottom left is a field labeled 'SOMETHING I HOPE CHANGES IN OUR FOOD SYSTEM:'. On the right side of the form is a large, empty rectangular box with a rounded border, intended for a photo. The bottom of the card is decorated with a horizontal line of small, colorful dots in magenta, yellow, and orange.

Food System ID Card



- Potential conversation starters:
 - *"What got you interested in sustainable food systems?"*
 - *"If you could fix one thing about the food system tomorrow, what would it be?"*
 - *"What is something you have learned recently that surprised or inspired you?"*
 - *"What is a food-related habit or practice you are proud of?"*
-

21.05.2025

Day 2: From the prototype to the reality

Parallel Session 2.2

How do we create inclusive partnerships? Challenges and opportunities we have learned about

21.05.2025

Day 2: From the prototype to the reality

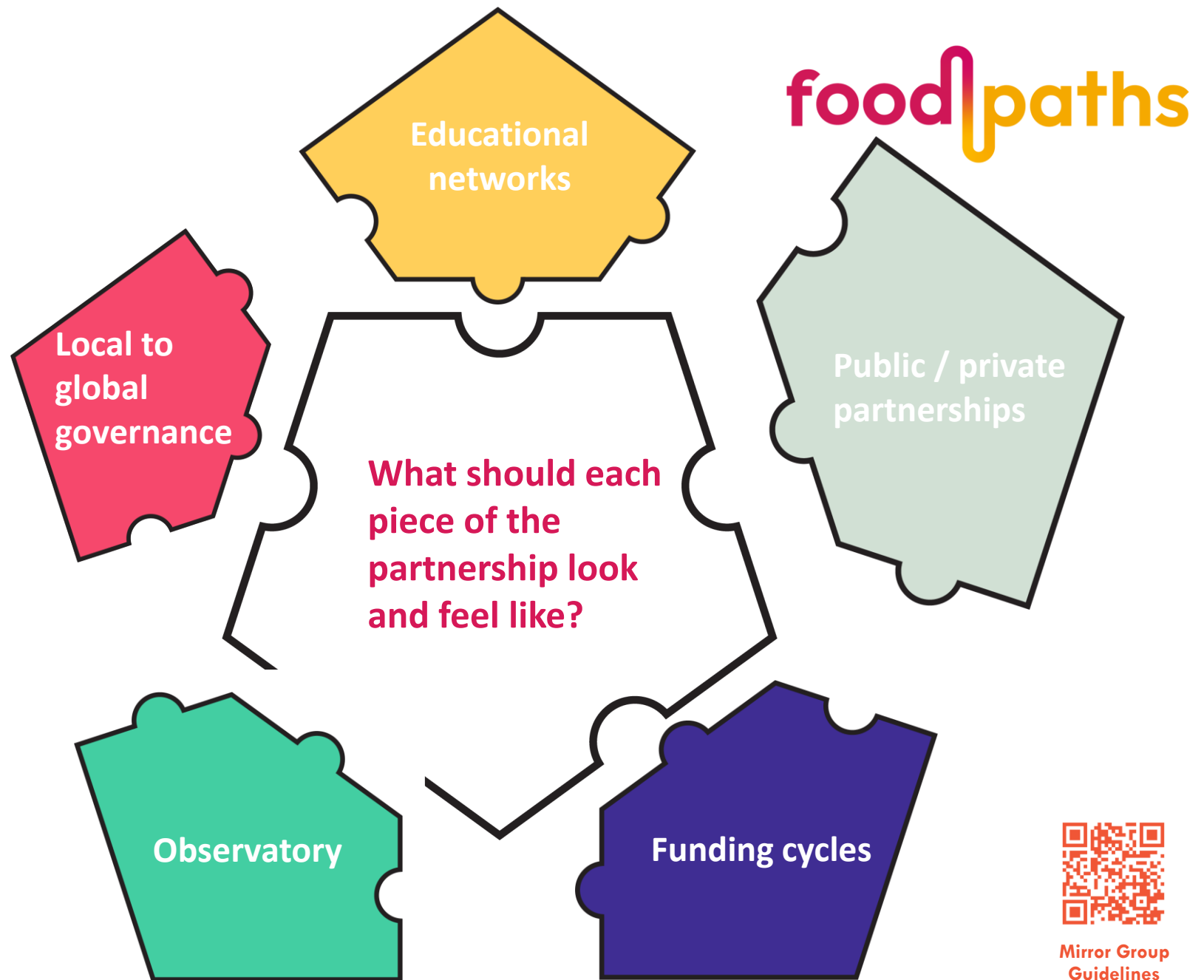
Parallel Session 2.2

Mirroring Activities in FOODPathS

What do Mirror Groups Do?

Bring together organizations and initiatives that are not directly involved in a project or partnership but may be impacted by it and/or have valuable related experience to contribute.

Mirror group participants learn about and reflect on the work happening in the project/partnership to provide useful input and recommendations to ensure that activities and decision making are as inclusive and impactful as possible



Mirror Group
Guidelines

The Mirror Group process so far...



3 online Mirror Group Sessions + many feedback sessions

- European Mirror Group Meeting in May 2024
- Global Mirror Group Meeting with individuals and organizations based outside of Europe in September 2024
- Combined meeting November 2024
- In-person discussions with Mirror Group participants at this Festival!

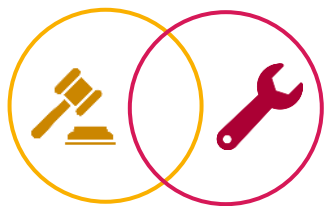


European Mirror Group
Summary Notes



Global Mirror Group
Summary Notes





Key elements of SFS governance



- **Sharing and Agreeing on common sustainability ambition(s)** via exchanging about ideas, priorities and preferences,
- **Striving for inclusiveness** inviting a diversity of actors to join forces
- **Cooperating** via interactions between divers actors in fair and just manners (power balanced; shared decision making; ...)
- **Respecting and/or redefining** formal and informal rules, norms, ...

Note: Governance principles set the scene for operational activities (modus operandi); The Modus operandi outcomes reveal if governance principles are respected and what needs to be changed to reach sustainable outcomes.

Mirrored visions of governance for a successful partnership...



ACHIEVEMENTS

Collaborative Identity, Shared Goals, Inclusivity, Equity

- A commonly agreed definition of SFS has been established;
 - All partners - including historically marginalized groups, small scale actors, both private and public entities - are now fully represented;
 - All partners align with the Partnership identity, share goals and feel responsible for its achievements;
 - Coordination roles have been established to align the efforts of all members;
 - There is a strong focus on social and ecological justice.
-

Mirrored visions of governance for a successful partnership...



DECISION-MAKING

Participatory, Bottom-Up Decision-Making:

- *Effectively balancing power and addressing imbalances.*

Transparency and Clarity:

- *Decision-making processes are now transparent, particularly regarding funding legitimacy and conflicts of interest, fostering stakeholder trust.*

Autonomous Spaces for Marginalized Voices:

- *Safe spaces for marginalized groups to express concerns and suggestions have been created, with decision-making structures prioritizing their needs.*

Expert Facilitation and Interpretation:

- *Expert facilitators are in place to manage stakeholder input, ensuring fair interpretations and accurate representation of all voices.*
-

Mirrored visions of governance for a successful partnership...



FEEDBACK MECHANISMS

Efficient Feedback Loops:

- *Feedback channels have been established to be capable of adapting to shifting geopolitical and economic landscape, also during the funding cycle process.*

Ongoing communication with partners:

- *In-person and hybrid meetings have replaced passive feedback methods, fostering active and ongoing participation among partners.*

Multi-channel and Inclusive Communication Strategies:

- *Diversified channels are being used to reach different audiences;*
 - *Language has been simplified to enhance accessibility for those outside the EU circles;*
 - *Storytelling has become a primary method for sharing results and successes, rather than presenting raw data.*
-

Would you like more information about organising up Mirror Groups?



Mirror Group Guidelines



European Mirror Group
Summary Notes



Global Mirror Group
Summary Notes

21.05.2025

Day 2: From the prototype to the reality

Parallel Session 2.2

What interviewees have shared with us

Assessing SSFS deals and multi-level governance practices



- To bilaterally engage and learn from **existing initiatives** to identify **best governance and implementation practices**
 - Semi-structured interviews
 - **27 initiatives** interviewed
 - Balanced representation of:
 - **Scales of action;**
 - **Areas of action;**
 - **Geographical location.**
-

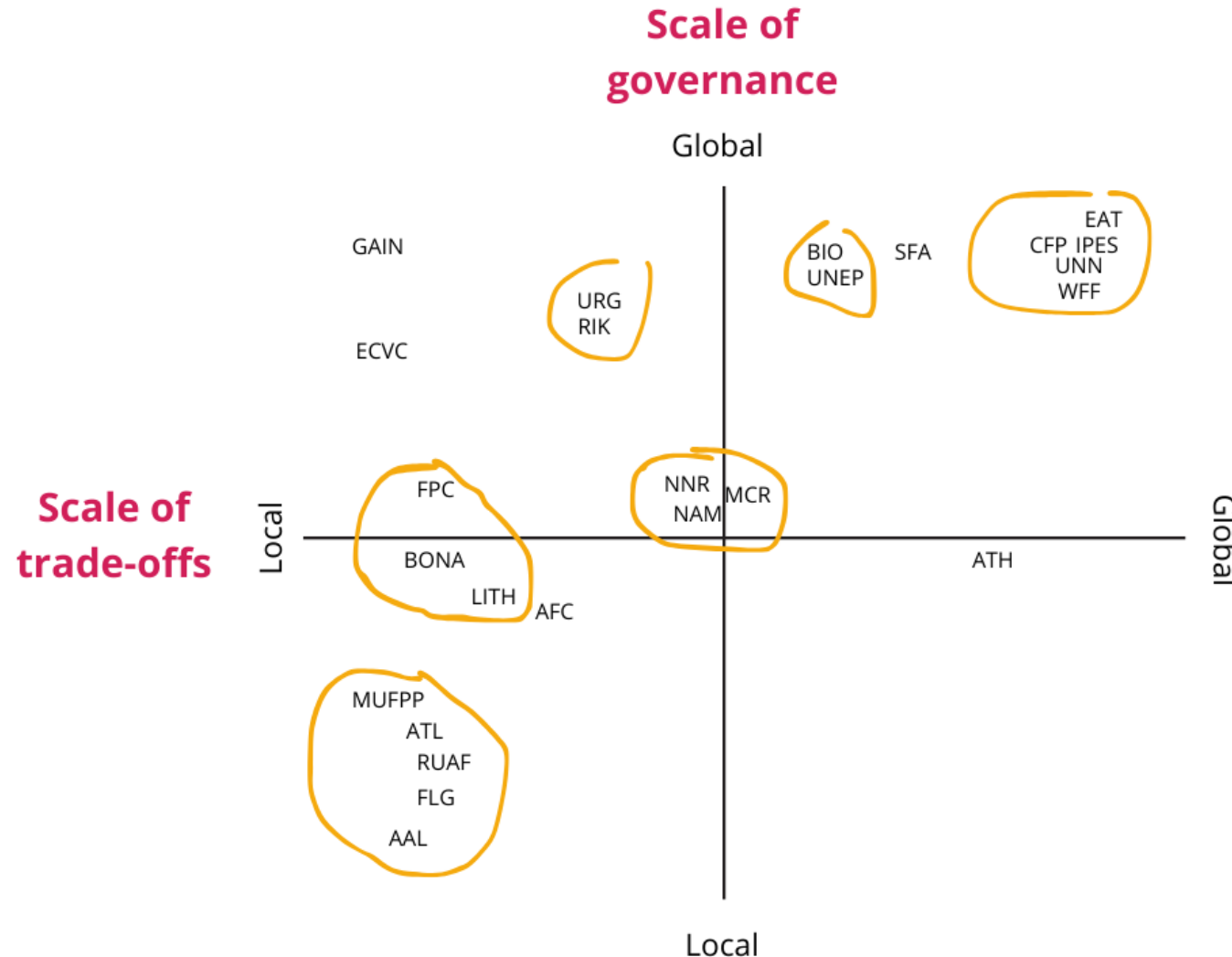
Building a typology of the initiatives

- General goals:
 - Identifying and classifying **existing trends in food systems transformation** built on interdependency between:
 - **Structural and governance arrangements;**
 - **Common drivers of change.**

Governance arrangements (Y-axis)	Drivers of change (X-axis)
Scale of governance	Scale of trade-offs
Level of decision	Range of targeted stakeholders/organizations
Range of inclusion	Navigating trade-offs
	Engagement strategies
	Orientation of intervention

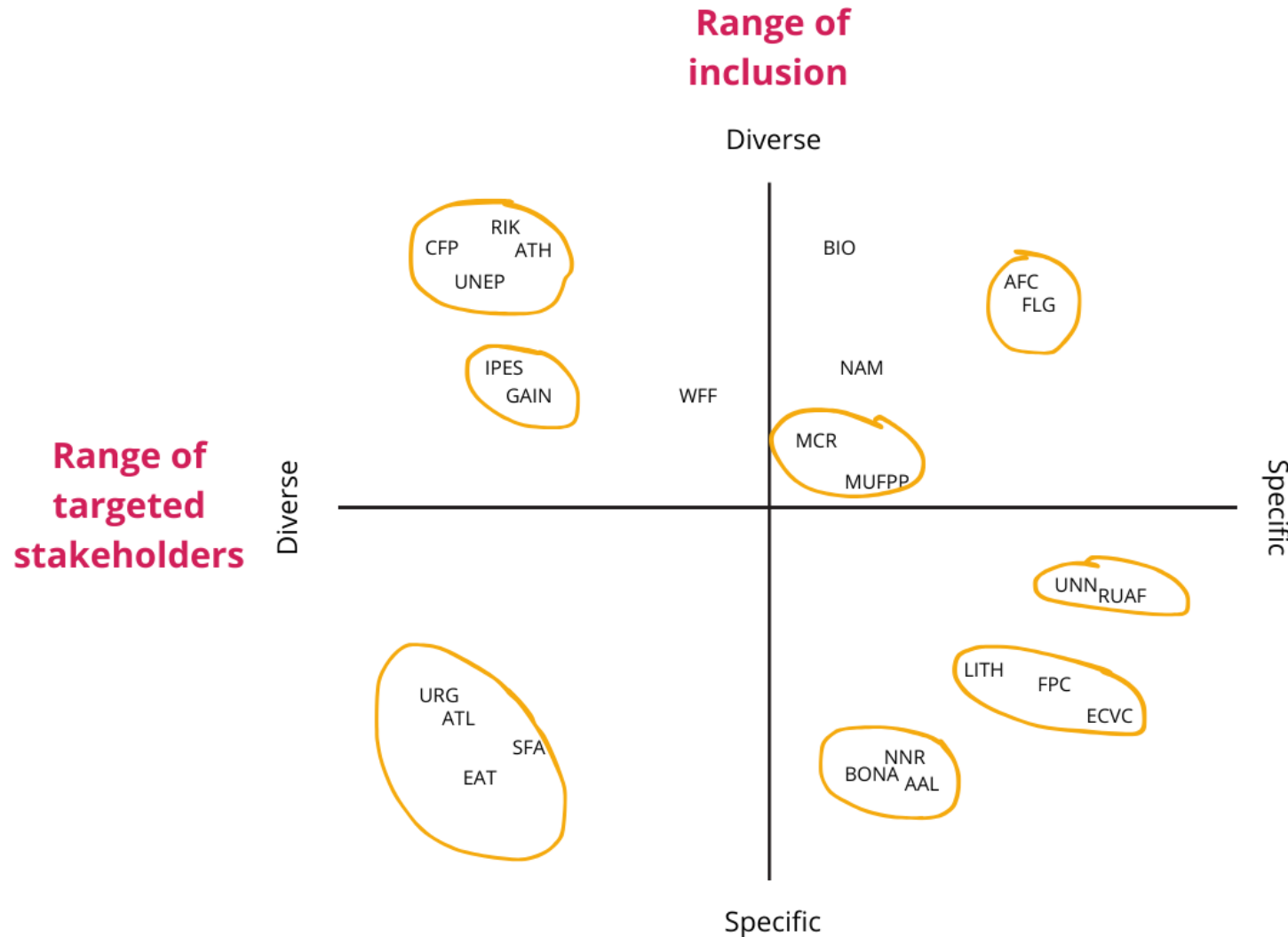
Table x: Parameters selected to build a typology of initiatives supporting sustainable food systems' transformation

Global knowledge and regulations and local implementation



Efforts to transform food systems are **distributed across levels** — it requires **inclusive actions** on **different levels**.

High level of participation, diverse forms of inclusion



Inclusivity doesn't always guarantee **targeted stakeholders are represented in decision-making**, but it often reflects **diverse stakeholder consideration**.

21.05.2025

Day 2: From the prototype to the reality

Parallel Session 2.2

Panel: How should a food systems
partnership function/what should it
focus on?

Role of healthy and sustainable diets

Wineke Remijnse (EFAD)

R

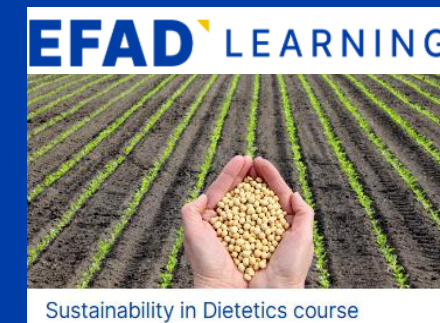
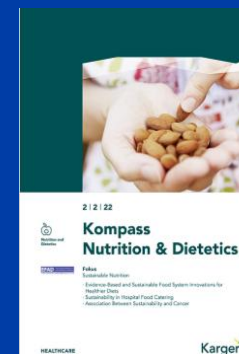
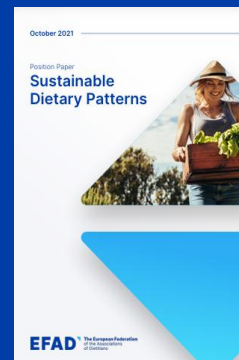
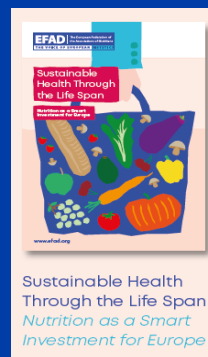
The Voice of European Dietetics.

Our primary goal is to improve nutritional health and promote sustainable diets



EFAD The European Federation
of the Associations
of Dietitians

www.efad.org



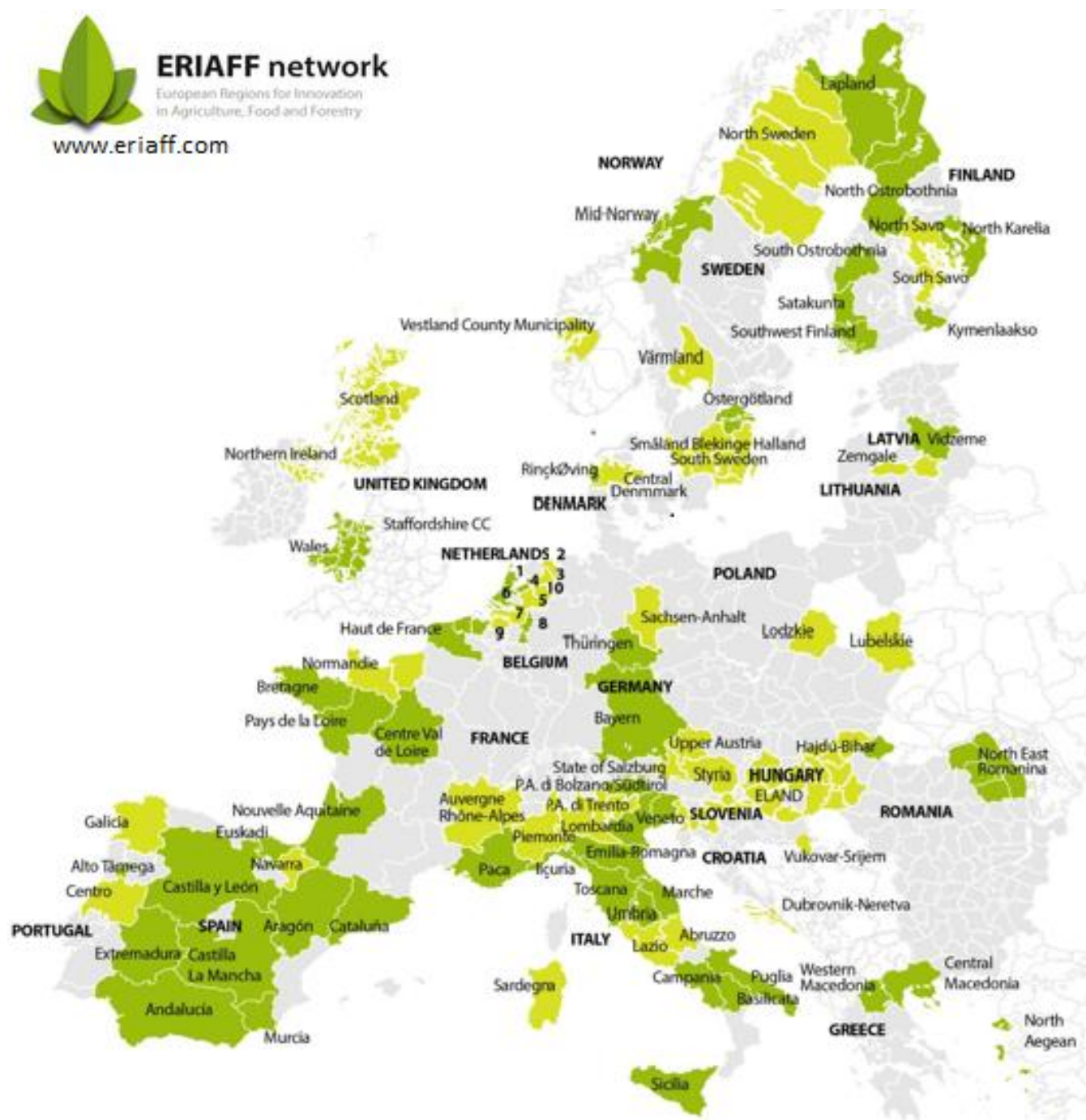


ERIAFF network

European Regions for Innovation
in Agriculture, Food and Forestry

www.eriaff.com

foodpaths



Role of regions in transforming food systems

Samuel Pii (ERIAFF)

European Citizens' Initiative: Food is a human right for all

Almudena Garcia Sastre (FIAN Europe)



Scan the QR code for
more information



www.goodfoodforall.eu/eci





Multi-organisations from global North and South

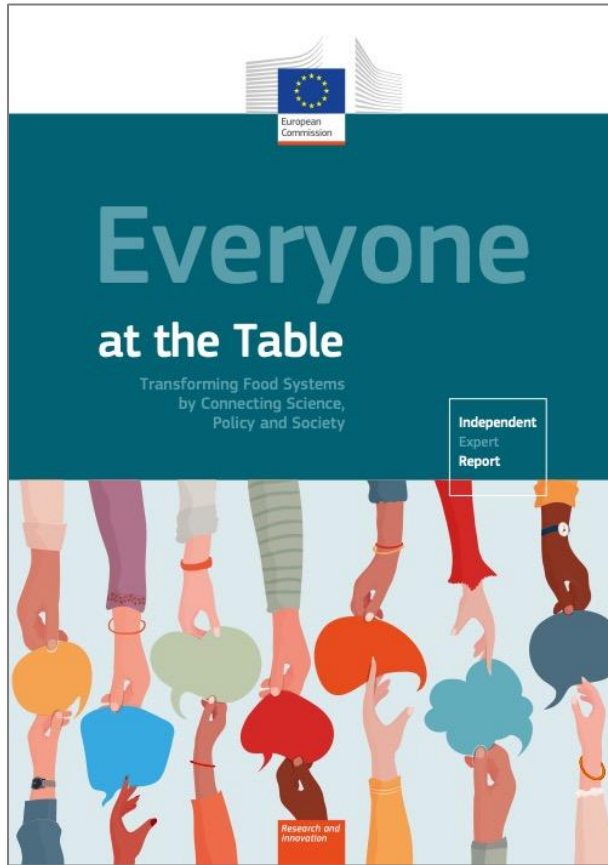
Ann Trevenen Jones (GAIN)



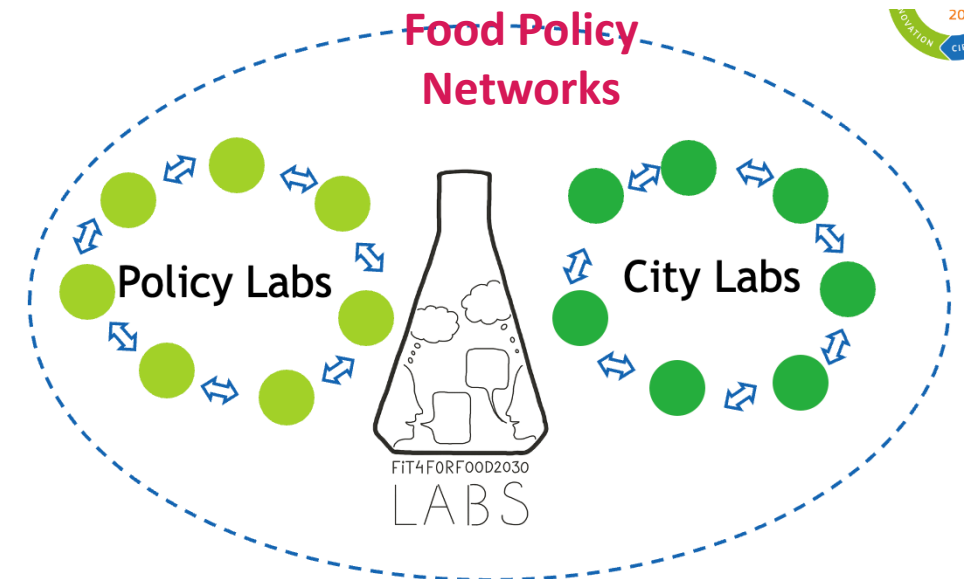
- Identify & “know your partner”
- Strategy, “Rules of Engagement”, Expectations
- Implement/Influence with effective inclusion for wider, deeper impact & transferability

Translating science into policy: participatory pathways

Jacqueline Broerse (Athena Institute, VU Amsterdam)



- **Political commitment**
- **Scientific evidence and other forms of knowledge**
- **Food systems lens**
- **Multistakeholder dialogues**
- **Science-Policy-Society interfaces**



21.05.2025

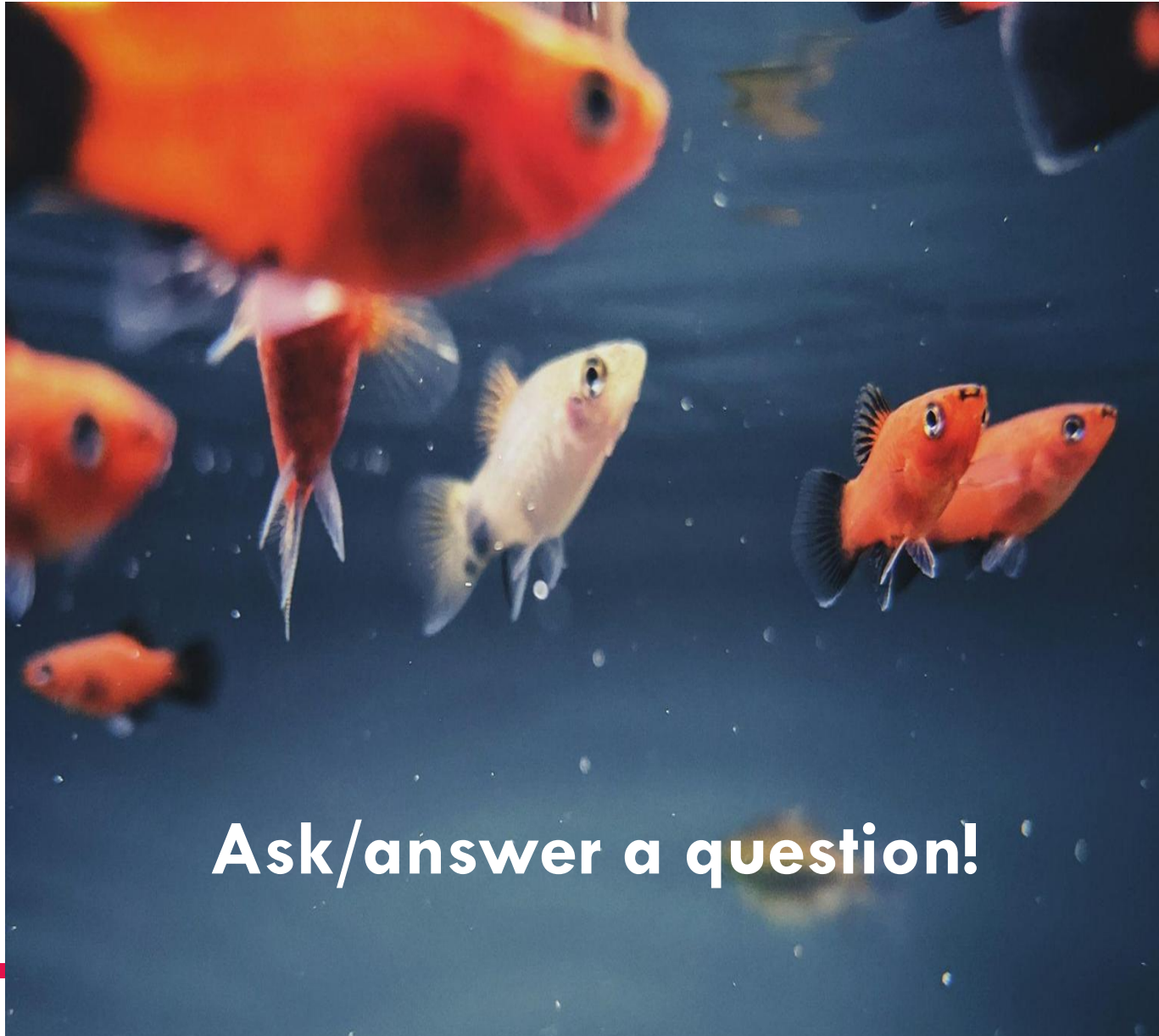
Day 2: From the prototype to the reality

Parallel Session 2.2

Fishbowl activity

Fishbowl Activity

food|paths



Swim in!

Ask/answer a question!

Swim out!



How to Fishbowl:

- *Do you have a question for someone in the fishbowl?*
Swim in!
- *Do you have a related story to share or an answer to a question asked?*
Swim in!
- **Swim in:** *Place your hand on the chair of the person you are replacing, when they see you, they stand up and you sit in their seat*





Fishbowl question prompts:

- *Swim in: Place your hand on the chair of 'a fish', when they see you, they stand up and **swim out**, you sit down*
 - *How would you like to engage with a EU-level partnership for SFS?*
 - *What is 'mission critical' for an EU-level partnership to focus on?*
 - *What was a key to success for a partnership to have been/are involved in?*
 - *What has stopped a partnership from being inclusive? (example of a failure)*
-

21.05.2025

Day 2: From the prototype to the reality

Parallel Session 2.2

Reflections and Next Steps

21.05.2025

Day 2: From the prototype to the reality

Parallel Session 2.2

THANK YOU!

FOODPathS Festival

STREAM STARTING SOON



food|paths



Funded by
the European Union

FOODPathS Festival

21 May 2025
14:15 - 15:30

**Bringing all the puzzle
pieces together**

food|paths



Funded by
the European Union

FOODPathS Festival

21 May 2025
14:15 - 14:45

Reports from parallel sessions

food|paths



Funded by
the European Union

Session 1.1 - A “Manual” for a Partnership



Exchange on the seven components of the FOODPathS ‘manual’:

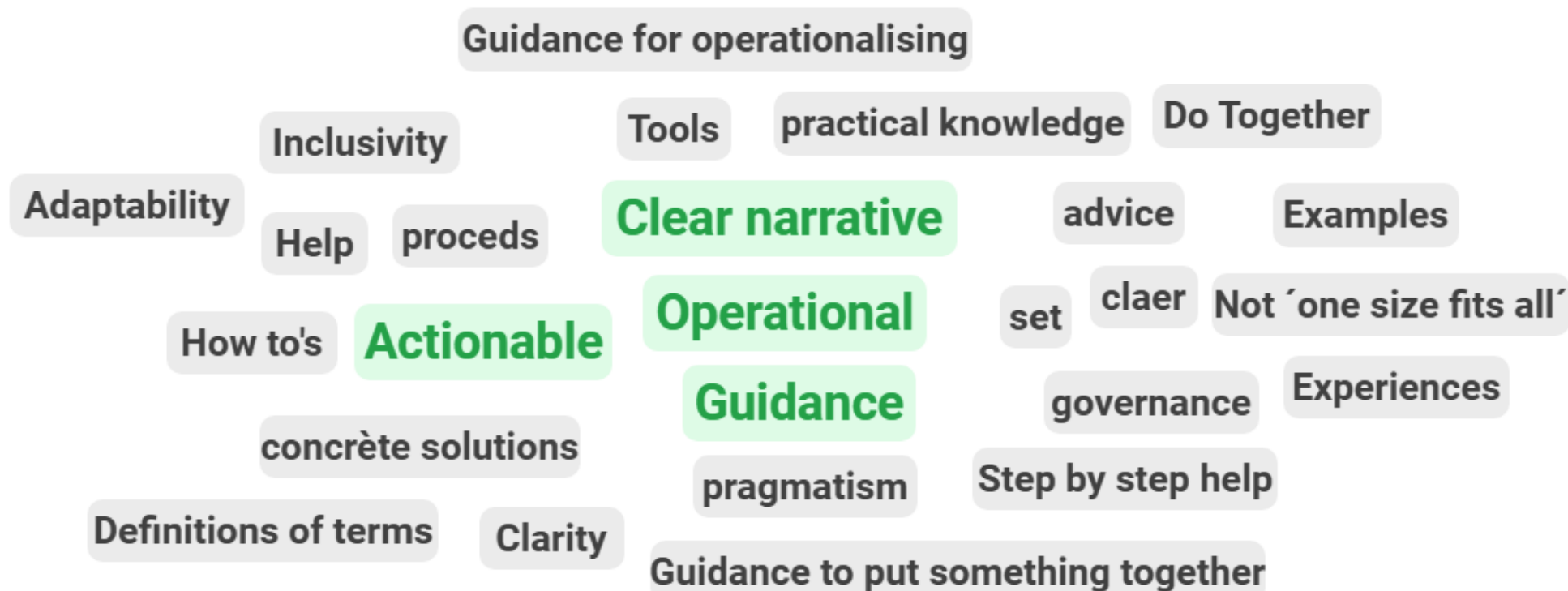
- **Governance:** not re-invent the wheel, clear structure and processes, trust ;
- **Knowledge** (*R&I, RIPE concept, education*): knowledge exchange (e.g. among Partnerships), lifelong learning, education, RIPE concept into reality, learning by doing ;
- **Experience** (*co-creation*): inclusion, integrate actors before allowing co-creation ;
- **Infrastructures** (*SRIA, knowledge hub, toolkit, university branded network*): generic methodology, branded network not only for universities but also for *capacity building* ;
- **Communication:** two-way communication, innovative ways to organise workshops ;
- **Observatory:** clear and understandable definition ;
- **Operations** (*Modus Operandi, system approach, co-funding*): inclusivity, actors, flexibility, frequent feedback loops to adapt to reality on the ground.

Session 1.1 - A “Manual” for a Partnership

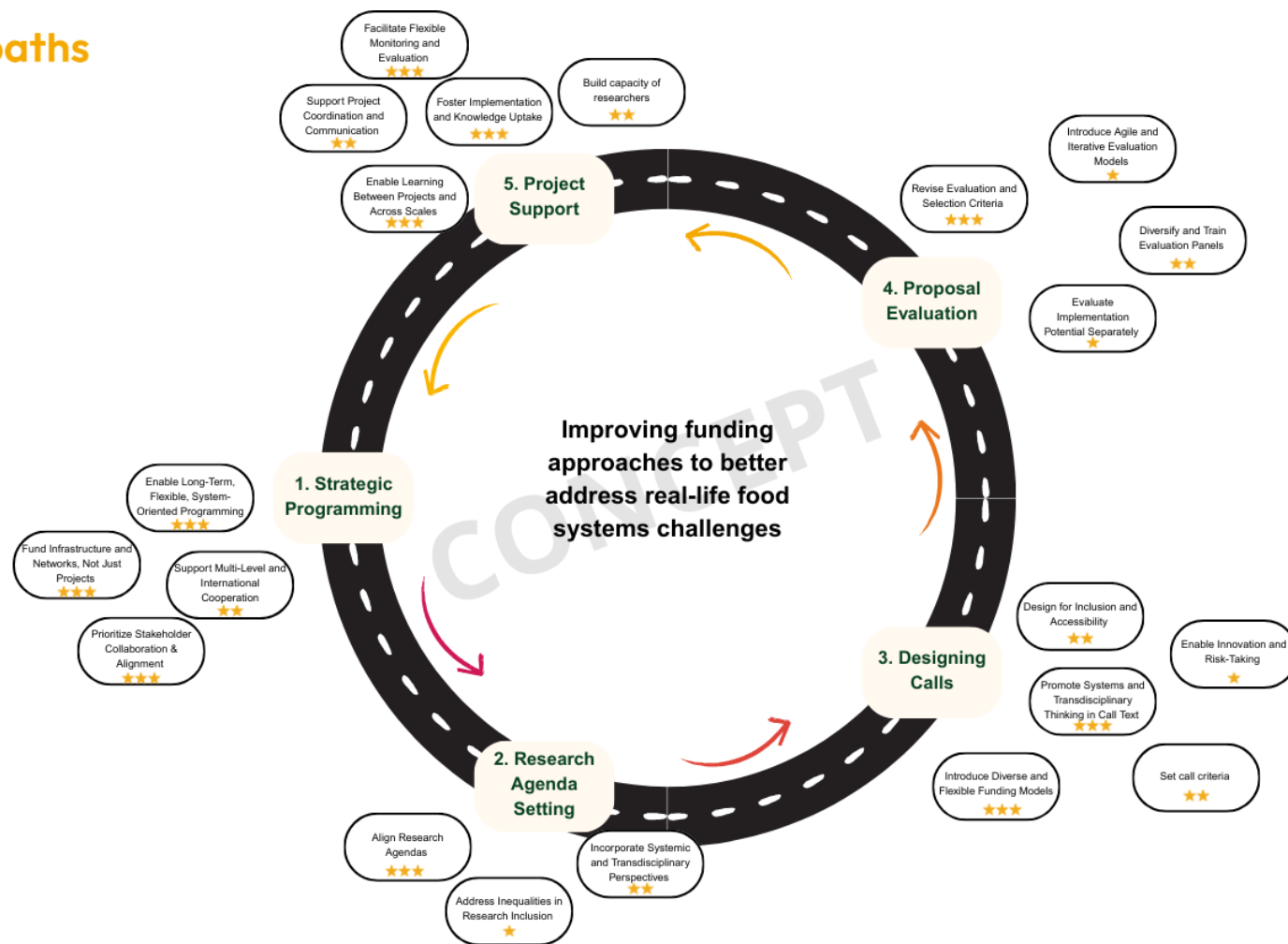


Parallel session 1.1. What do you expect from a manual?

Review answers 24 >



Session 1.2 - Transforming funding approaches for transformative food systems R&I



Key functionalities & services identified

Targeted & **inclusive** access

- Identify target groups and tailor content to their needs
- Ensure open access, multilingual support, and user-friendly design
- **Raise awareness about Living Labs (common definition)** and engage underrepresented actors

Connections & networking

- Facilitate structured **peer exchange among Living Labs** and stakeholders
- Foster cross-sector coordination (public, private, academic, **civil society, policy**)
- Link with existing platforms and support interoperability
- Create learning communities and communities of practice

Knowledge Sharing & Communication

- Curated content: tools, guidelines, policy briefs, case studies
- **Story maps, results dissemination, guided tours**
- Enable matchmaking, **live events**, and virtual networking
- Support training (**webinars**, e-learning, expert guidance)

Policy support & strategic orientation

- Offer evidence-based data for policymaking (e.g., Nutri-Score)
- Promote **reflection on food transition, behaviour, and sustainability**
- Align with EU frameworks and funding opportunities

Sustainability and Governance model

- **Moderator**/curator to keep content dynamic and community engaged
- **Start from practice:** governance should follow **the actual operation of the Knowledge Hub**
- **Sustainability options:**
 - **free access / value added services Membership fees** adapted by organisation type
 - Free trial periods for start-ups or small labs
 - Private sponsorship
 - Platform ownership: should be open-access, run by **a non-profit, neutral body**
- **Advisory boards** with representatives from Living Labs, regions, and the full value chain:
 - To meet regularly, guide development, and promote the Hub
 - Representation and election-based participation suggested
- **Multi-layered governance:** central coordination with decentralised application at national/regional level.
- **Inclusivity:** ensure participation of public sector, consumers, and underrepresented labs
- **Link with existig initiatives** (e.g. Cleverfood, FTPs) to **avoid duplication** and build on existing efforts

SAVE THE DATE



7 October 2025 - Joint Event by FOODPathS & FutureFoodS

What to expect?

- An interactive event designed as part of the European Knowledge Hub, bringing together food system actors across research, policy, innovation, and education.



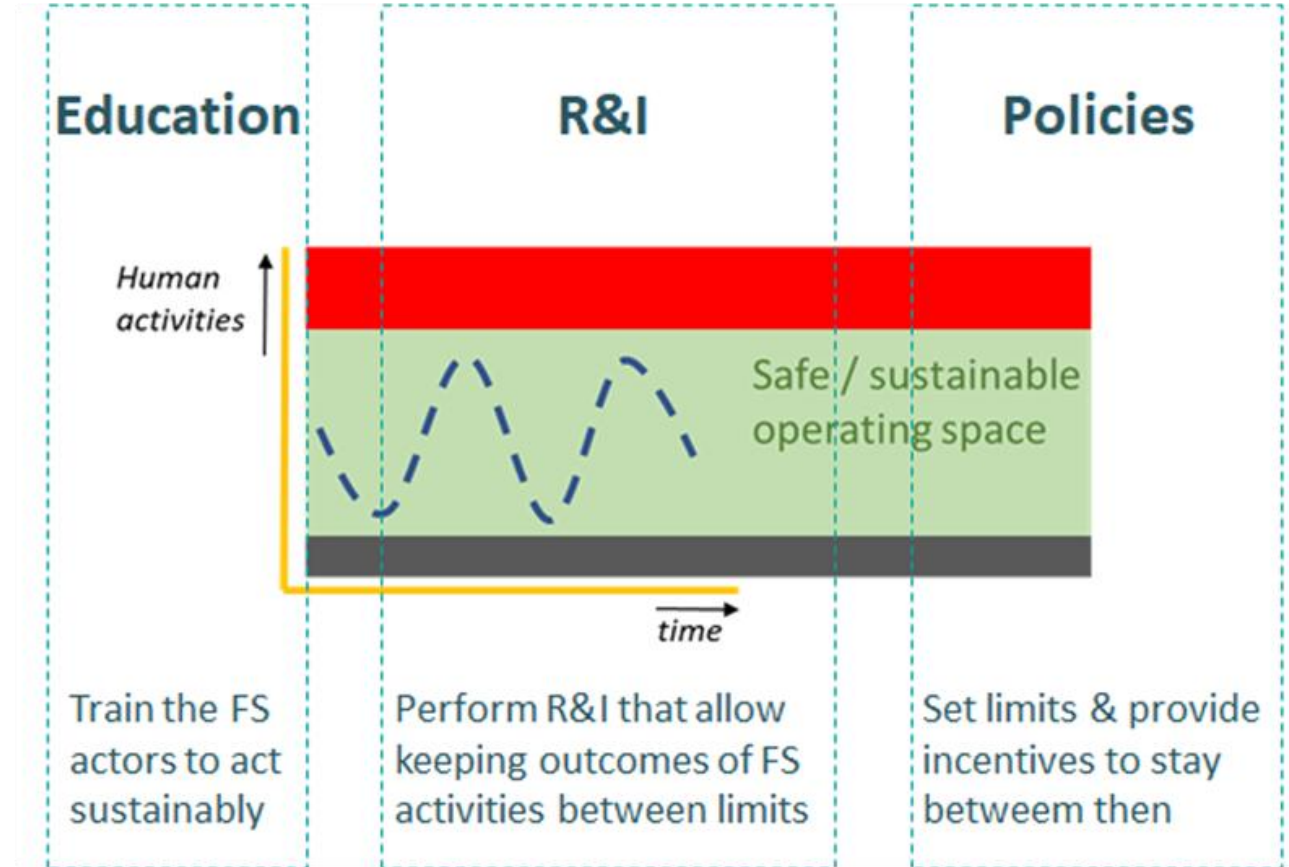
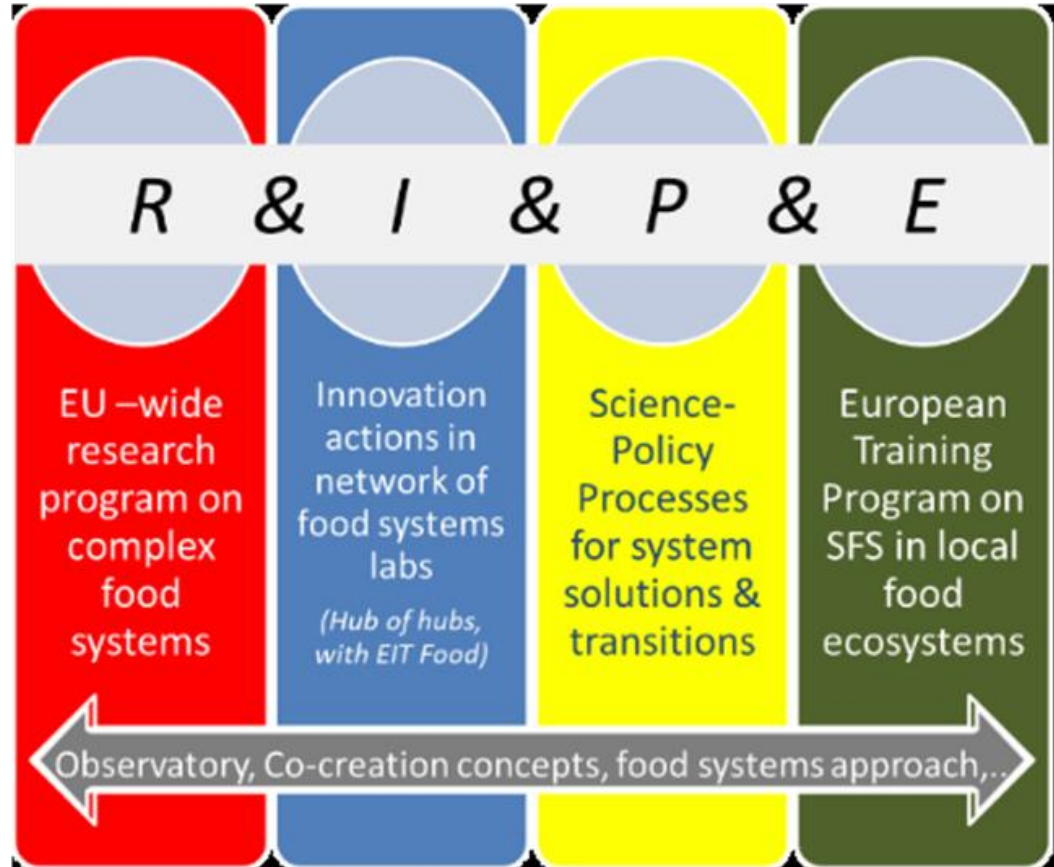
Ariane Voyatzakis, ANIA
Anna Kirkegaard Vaarst, AU – ICROFS
Elisabetta Pierantoni, Confagricoltura
Greta Borrelli, Confagricoltura
Lorenza Liroso, FoodDrinkEurope
Maarten Uyttebroek, Flanders' FOOD
Merete Studnitz, AU – ICROFS
Nouredin Driouech, CIHEAM Bari

Thank you!

Session 2.1 - Portfolio management, science advice and education: what is the link?



The RIFE pillars and simplified concept



Fishbowl session



- 1) How can we better align public research agendas and education programs with the needs of SMEs, start-ups, and innovators to contribute to SFS transition?
- 2) When integrating education, policy advice and R&I, what would be an effective, future-oriented knowledge infrastructure for sustainable food systems look like?
- 3) To what extend will this RIPE be a guiding concept for aligning these activities?
- 4) How do you see the linkages between the RIPE components, and where do you see opportunities for synergy?

1. Aligning Research and Education



- **Focus on soft skills and systems thinking to enable collaboration between different disciplines AND** to introduce truly FOOD SYSTEMS APPROACH.

“We are good in different topic but we need to be trained as a team (teamwork skills) – topic are far too complex so we need competences to collaborate on the same, broad, ‘systemic’ topic but with groups of different expertise.”

- **Practice-embedded curricula and internship:** Integrate internships and dual thesis programs with industries partners.

2. Future-Oriented Knowledge Infrastructure



- **Exemplary Model from Academies (within the EIT Food)** offering lifelong learning for students, professionals, and **the policymakers**. EIT Food approach bases on 1. Design innovation curricula 2. Supporting the start-up 3. Fostering RIS 4. Infrastructure to support technology transfer.
- **Innovation gateways** that connect academia/PhDs and start-ups through embedded tech transfer offices, incubators, and accelerators.
- **Science–policy interfaces (OR SINGLE INSTITUTION?)** that enable continuous, structured dialogue between researchers, policymakers, and administration and **consistent advise on** the Vision (for agriculture and food) of the EU.
- **Multilevel alignment nodes** that translate synthesized research into coherent policy across EU, national, and regional levels. To define what is managed by member States and what is managed by collaboration of sectoral actors. Important is to keep multilevel approach to link different needs and solutions.
- **Living and policy labs** that enable concurrent research, prototyping, and pre-policy assessment.

3. RIPE as guiding concept



- **RIPE is still largely conceptual**, but it's increasingly acknowledged by stakeholders as a shared narrative that helps to systemically align research, innovation, policy, and education.
- **It will only become a true guiding framework once it's filled with concrete pilot actions** (e.g. networks, academies, labs) and paired with safeguards for scientific integrity during co-creation processes.
- **RIPE has the potential** to function as a strategic coordination framework, facilitating the alignment of education, policy, and research and innovation (R&I) through the promotion of systems thinking, structured collaboration, and evidence-informed policy development.
- **The effectiveness of RIPE will depend on** its capacity to integrate scientific expertise, elucidate interdependencies within the food system, and support the consistent synthesis and translation of knowledge across all levels of governance.

4. Linkage between the RIPE components



- Synergies arise particularly in **coordinated consortia** and **team-based transdisciplinary training**, where each pillar acts both as an input and output for the others - research to policy to research.
- Education should be **influenced by new incentives, policy measures** – current paradigm should be challenged. Maybe university alliances / EIT Food (having recognizable label) can play role in this process.

Takeaway message



RIPE **has the potential** to function as a strategic coordination framework and needs to be institutionalised.

Pact for skills and ELT Food is a good example linking research and innovation and education in targeted programmes

SFS approach in general education!

Session 2.2 - Inclusive Partnerships in real-life: a major challenge



Key takeaways from the panel (part 1)

- Dietitians play a crucial role in ensuring that healthy diets are not only **nutritious, culturally appropriate, but also affordable, feasible, and realistic** for all.
- The **call to action** is clear: **the EU must adopt policies aligned with these principles to build just, sustainable, and inclusive food systems.**
- **Trust and strong relationships are essential—built at local, city, regional, and global levels.**
- **While shared visions are easier to agree on, operationalizing them is more difficult** due to rapidly changing contexts.



Key takeaways from the panel (part 2)

- **A key insight: understanding partners' perspectives—their "red lines"—is crucial for effective collaboration and long-term success.**
- **There is urgent need for research and innovation to inform and support policy transitions in food systems.**
- **A systems approach is essential**—bridging fragmentation across actors, sectors, and geographic divides (rural-urban).
- **Research must be grounded in real-world contexts**, incorporating experiential and practical knowledge alongside scientific evidence.



Key takeaways from the fishbowl discussion:

- Effective transformation requires inclusive **science-to-policy interfaces, engaging civil society, the private sector, and local communities.**
 - **Dialogue is critical**—it must be **open, based on mutual interest**, and rooted in a willingness to understand the **diversity of perspectives** on food systems.
 - Building effective partnerships requires **creating bridges both horizontally** (across sectors and actors) **and vertically** (from local to global levels).
 - Not all partnerships are permanent; **dynamic, flexible networks that evolve to meet specific goals are critical.**
 - Expecting rapid implementation of food policy networks is **unrealistic**; building **effective networks** takes **time, patience, and sustained effort.**
 - **Effective communication** involves developing clear narratives that answer “what’s in it for me?” and understanding community contexts.
-

FOODPathS Festival

21 May 2025
14:45 – 15:30

Composing the puzzle: how can it work in the real world?

food|paths



Funded by
the European Union

21.05.2025

Composing the puzzle: how can it work in the real world?



Anna Bruen
ICLEI



Claude Yven
ANR & FutureFoodS



Simone Maccaferri
CBE JU



Katalin Toth
Joint Research Centre



Moderator
Jasmina Von Driel
ZonMw

Send your questions!



Slido.com

#Festival2025

21.05.2025

Composing the puzzle: how can it work in the real world?



Anna Bruen
ICLEI



Claude Yven
ANR & FutureFoodS



Simone Maccaferri
CBE JU



Katalin Toth
Joint Research Centre



Moderator
Jasmina Von Driel
ZonMw

Day 2:

Discovering, sharing and learning: examples of partnerships in the real world

21.05.2025

Site visits & capacity building



**La Ferme du
Parc Maximilien**

Debora

Meeting point:
outside, main
entrance



**CHORIZO
training**

Lea

Meeting point:
Gamay room



**No Waste
Republic**

Damien

Meeting point:
Posters room



BIGH Farm

Sofia

Meeting point:
dining room

Are you not joining us? Read our posters!

food|paths



CHORIZO
PROJECT



FutureFoodS

CLEVER
FOOD

food|paths



SOILL
STARTUP

**Or have some
relax with the
FOODPathS quiz!**



Why don't you give a chance to our podcast?

food|paths



FOODPathS Festival

THANK YOU FOR ATTENDING

food|paths



Funded by
the European Union