



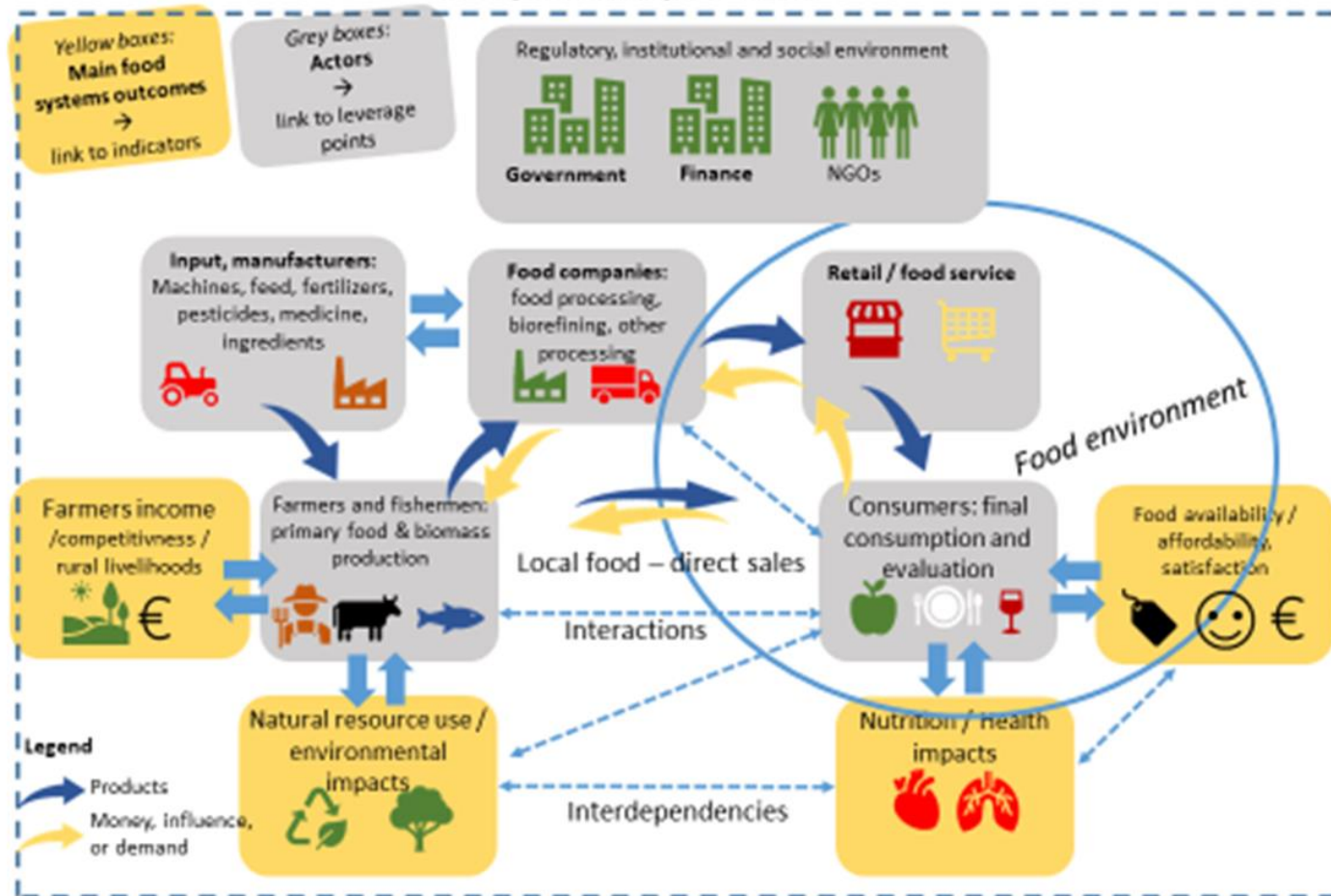
Presentation: 'A Food Systems Approach in light of the Sustainable Food Systems Partnership'

Merete Studnitz, Susanne Hansen and Ivana Trkulja (AU Team)



Food Systems Theory

Food system conceptual model



- **Interactions** between actors with specific objectives, roles and interests
- Resulting feed-back loops - **level of complexity!**
- The resulting **interdependencies** of outcomes – including consequences for different stakeholders?
- **Drivers for change:**
 - Pressure from stakeholders, policies
 - Innovations in technologies, self-governance, niche development, ...
- **Identifying barriers to change:**
 - Negative feed-back loops, lock-ins, unaccepted trade-offs....

Food Systems Approach



- A fully realised FS approach needs to take into account:
 - 1. The Impacts (of change) Across the Full Food System** to highlight the connections among different food supply sectors/actors and the important role of biophysical, social, economic, and institutional contexts.
 - 2. Consider All Domains and Dimensions of Impacts** to capture the potential trade-offs across health, environmental, social, and economic outcomes associated with alternative configurations of the food system effects.
 - 3. Account for System Dynamics and Complexities** by treating the food system as a dynamic, adaptive system with heterogeneous actors and not necessarily predictable systems-level outcomes.
- What are the most important aspects of this approach to include in transnational call mechanism under the Sustainable Food Systems Partnership?

Consider levels of implementation



FUNDERS – design the call mechanism

- Write the call text integrating FS approach
- Provide relevant project selection and impact criteria reflecting FS approach
- Work on the national and regional levels to integrate FS approach in the national strategic programming

RESEARCHERS – project proposals

- Plan a project in a way to reflect FS approach

EXPERTS – project evaluation

- Measure impact
- Synthesise knowledge on FS level (observatories and knowledge hubs)

Example: ERA-NET Food Systems Call

Joint Call SUSFOOD2 and CORE Organic 2019 ‘Towards sustainable and organic food systems’

- **Multi-actor-approach:** Involve different actors and stakeholders in your research project from the outset (by means of participation as well as transparent communication) → *Impacts across the food system*
- **Multi-disciplinary approach:** Take account of different viewpoints and involve actors from the disciplines beyond your existing network → *Impacts across economic, social.. outcomes*
- **System approach:** Consider interconnections, synergies or trade-offs between different aspects or actors that directly or indirectly affect your field of research on a systems level (e.g, economic, environmental, social, legislative, geographical, behavioural, business environment, etc.). → *System dynamics and complexity*

Other Call Criteria and FS approach



Other call criteria to be decided about when writing calls:

- SRIA
 - Call scoping exercise in 4 thematic areas (Eat, Process, Connect, Govern)
 - Considering the impact pathways (Ensure access to safe and nutritious food for all; Help to mitigate climate change and adapt to its impacts; Stepping up to fight against food waste)
 - Thematic areas and impact pathways are interconnected
 - How it will contribute to FS change?
- PROJECT IMPACT CRITERIA AND ADDED VALUE
 - Potential to reach expected impact and innovations, embracing of cross-cutting issues, added value of transnational cooperation and geographical coverage.
- TECHNOLOGY READINESS
 - TRL Level range from 2 to 5 (example)
- DEFINING SCALES
 - National/regional outreach
 - Time span

Nota bene!



- The food system approach moves beyond the mere food production systems!
- **The food systems embraces all elements:** environment, people, inputs, processes, infrastructure, institutions, and power relations, markets and trade
- **The food system embraces all activities** that relate to production, processing, distribution and marketing, preparation and consumption of food.
- **We are focusing on ‘complex systems’** vs. complicated systems
- **We are focusing on ‘integrated systems’** vs. mixed systems



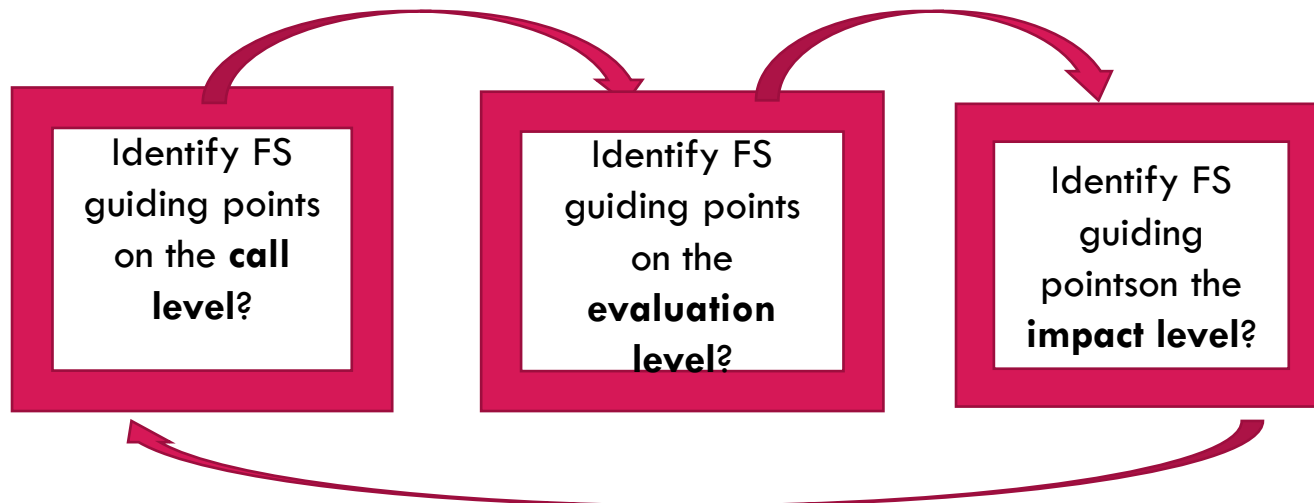
Interactive Group Work: 'Operationalising a Food System Approach in the call mechanism'



Workshop 13.30 – 15.10


→ What are the most important aspects to include in transnational call mechanism under the Sustainable Food Systems Partnership?

- Half of you go with Nikola, the other half go with Ivana, they will introduce to two different cases to inspire you when developing the guiding points.
- In each of the 2 groups you will be further divided into 3 smaller groups, the facilitators will guide you
- You will be asked to take on the perspective of one of the 3 levels below and discuss for about 15 minutes on how to define and implement relevant call criteria with FS focus



Workshop 13.30 – 15.10



- After about 15 minutes you will move  onto the next smaller group.
- Your new facilitator will sum up what the previous group discussed, and then you will discuss the question from a new perspective.
- After having visited and discussed all three perspectives, the two groups of similar perspectives from different cases meet to exchange conclusions (now three groups of about 20 persons)
- Finally the three groups will have 2 minutes each to share highlights in plenum.

- All the information will remain on the flip charts and will be used for final feedback session all together.

Consider levels of implementation



FUNDERS – design the call mechanism

- Write the call text integrating FS approach
- Provide relevant project selection and impact guiding points reflecting FS approach
- Work on the national and regional levels to integrate FS approach in the national strategic programming

EXPERTS – project evaluation

- Select excellent projects what should the guiding points be?

OUTPUT – Measure project impact

- Which guiding point to indicate the FS-approach?
- What will be measurable?



OUTCOME: HOW WOULD YOU IMPLEMENT FS APPROACH IN CALL MECHANISM?

So that it is **visible, implementable and measurable**

On the **call text level**

On the **evaluation level**

On the **impact level**



Any Questions?

food|paths



Funded by
the European Union

merete.studnitz@icrofs.org; sha@dca.au.dk;
ivana.trkulja@icrofs.org