



Funded by
the European Union

Co-creating the Prototype Horizon Europe Partnership on Sustainable Food Systems for People, Planet and Climate

29 November 2022 – FOODPathS Funders Forum

Hugo de Vries,
Coordinator of the EU project FOODPathS, INRAE, EFFoST Board



Storyline of the future Partnership SFS (P-SFS)



Needs



Food Waste:
In the EU, around **88 million tonnes**
(EU-Fusions, 2016)

EU:
Obesity: ~15%;
Overweight: ~50%;
(G. Brunori, SCAR SW FS, figures of 2017)



Evidence



Actions



[European Partnership for Safe and Sustainable Food System for People, Planet & Climate](#)

[SCAR – Food Systems Partnerships](#)

Since 2019: Start with workshops
June 2021: Narrative & Fact sheet
April 2022: **TEMPLATE**
June 2022: **Start CSA FOODPaths**
Mid-Dec 2022: **SRIA open consultation**
Jan. 2022: **SRIA final version**
Mid-Apr. 2023: **Proposal future P-SFS**
2024: **Foreseen start P-SFS**

SRIA Focus areas *(open consultation)*



Vertical

TF1 – Change the way **(what) we eat**

TF2 – Change the way we process and supply

TF3 – Change the way we connect **(act) citizens and food production**

TF4 – Change the way we govern the food systems

Horizontal

TF5 – Co-funding and Programming

TF6 – FS observatory, data, methods

TF7 – FS knowledge hub of FS Labs

TF8 – Knowledge sharing and scaling

https://scar-europe.org/images/FOOD/Main_actions/Food-Systems-Partnership_Narrative-06-2021.pdf

https://ec.europa.eu/info/files/european-partnership-safe-and-sustainable-food-system-people-planet-climate_en

All topics considered from a FS lens



Ericksen, P., 2008
(Oxford)

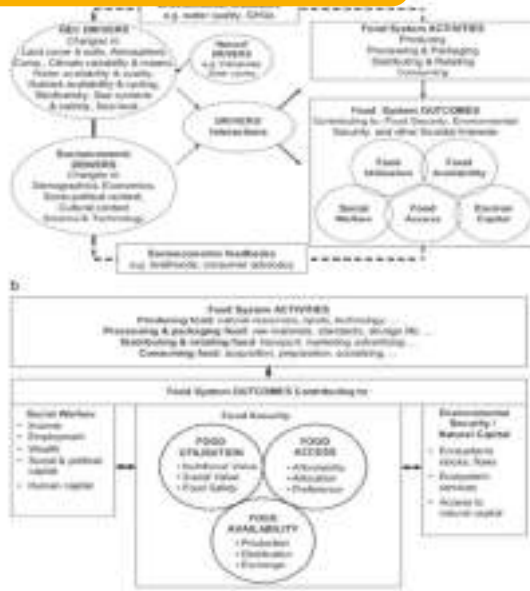
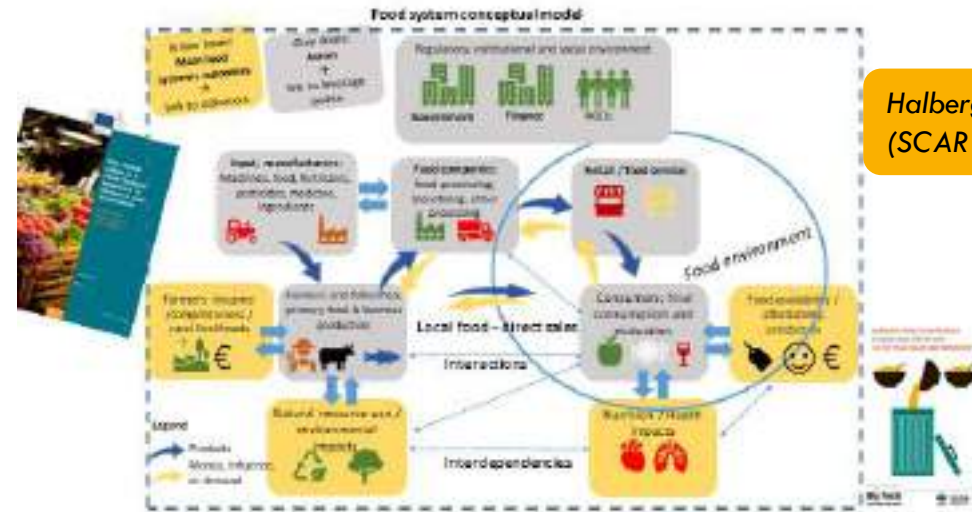
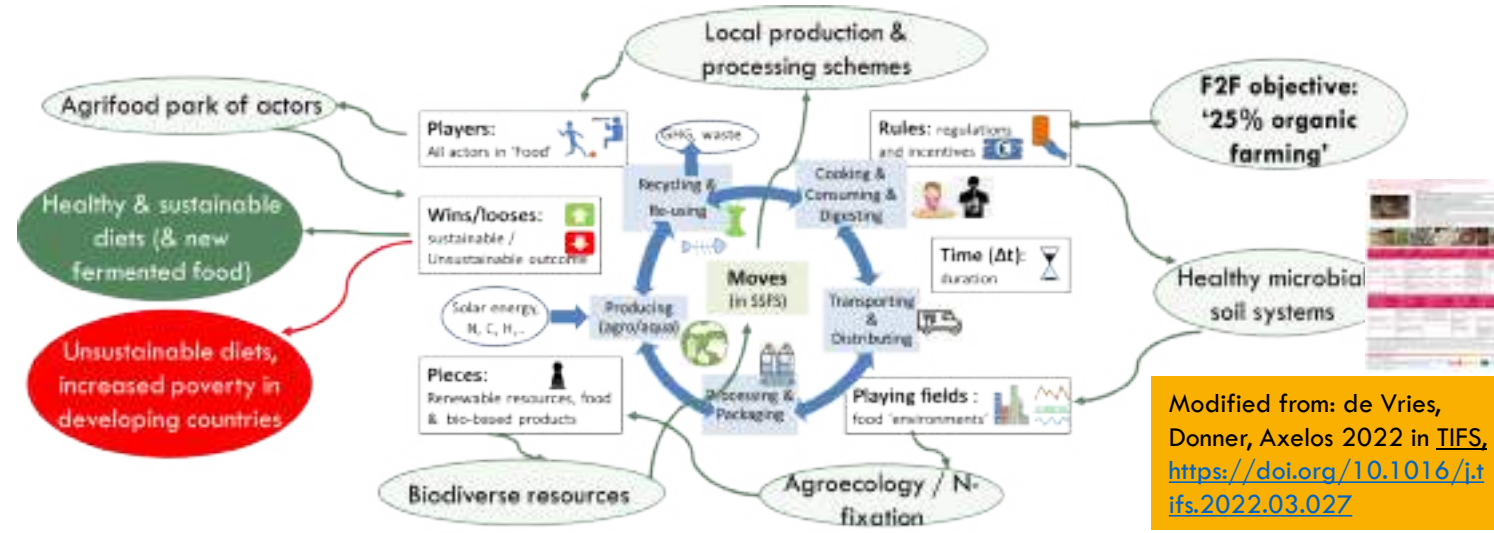


Fig. 2. (a) Food system and (b) drivers. (c) Components of food system.



Halberg and Westhoek, 2019
(SCAR SWG FS)



Modified from: de Vries, Donner, Axelos 2022 in TIES, <https://doi.org/10.1016/j.ifts.2022.03.027>

Preparatory Action to co-create the Sustainable FOOD Systems PArTnersHIP'



- From 'nothing' to a new Partnership SFS: too large step! >
- Hence HE Preparatory Action > spaghetti exercise > CSA Project no. 101059497
- Call topic: 'HORIZON-CL6-2021-GOVERNANCE-01-03 'Preparatory action for the HE Food Systems Partnership'.
- Duration: 3.5 year (since 1/6/2022) & Budget: 4.9 M€
- 17 partners representing 19 networks

- The project aim: 'FOODPathS' will design the 'Prototype SFS Partnership'.

Our partners



Our networks



As governance model, one could chose:

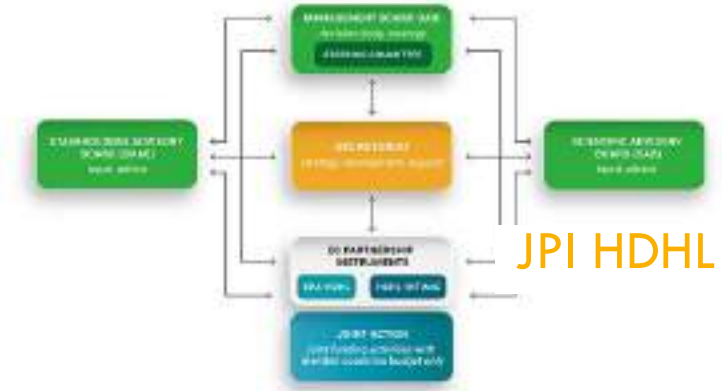
food|paths



Biodiversa+



Water4all



JPI HDHL

PRIMA



Or ... or ... or



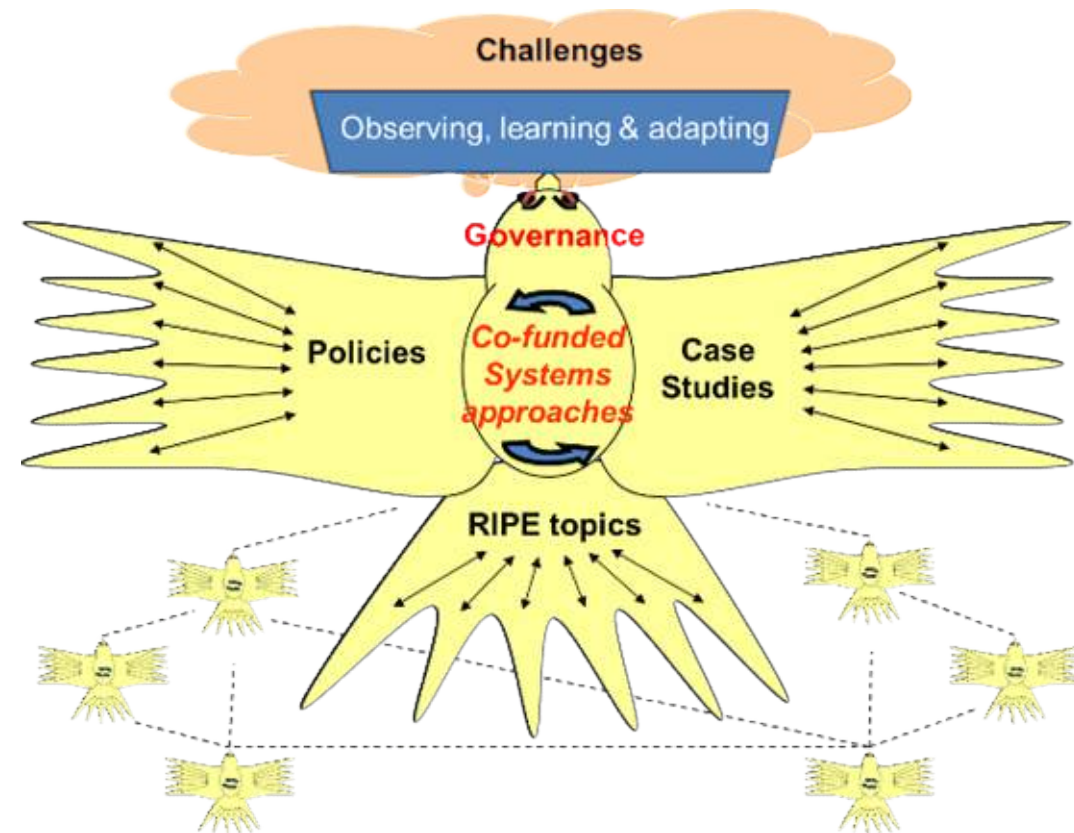
Narrative P-SFS

But why and where based on?

Some first considerations for its governance model

The P-SFS bird(s) should fly in the *right* direction:

- Coherent 'ensemble / orchestration' (it is a 'complex, inclusive' partnership!)
- Forming a flock with other HE Partnerships in Cluster 6 and beyond



Adapted from Figure 1 CSA FOODPathS project;
Design H. de Vries and H. Schepers

The 'Partnerships' in the wider agro-food domain



Key elements for building its governance model



- The Prototype will serve as the first version of *HOW the future Partnership will function from 2024 onwards*, including:
 - systemic way of working (FS approach, understanding SFS)
 - co-funding strategies (funders forum),
 - lessons learnt from co-creation cases (vitrine),
 - exemplary network of universities (sustainability charter),
 - exploitable SRIA for R&I, science-Policy & Education (RIPE) actions,
 - verified list with potential trade-offs and co-benefits (beyond the common EC strategy),
 - communication means (making complex food systems actions understandable and get feedback)
 - Modus Operandi (SMART),

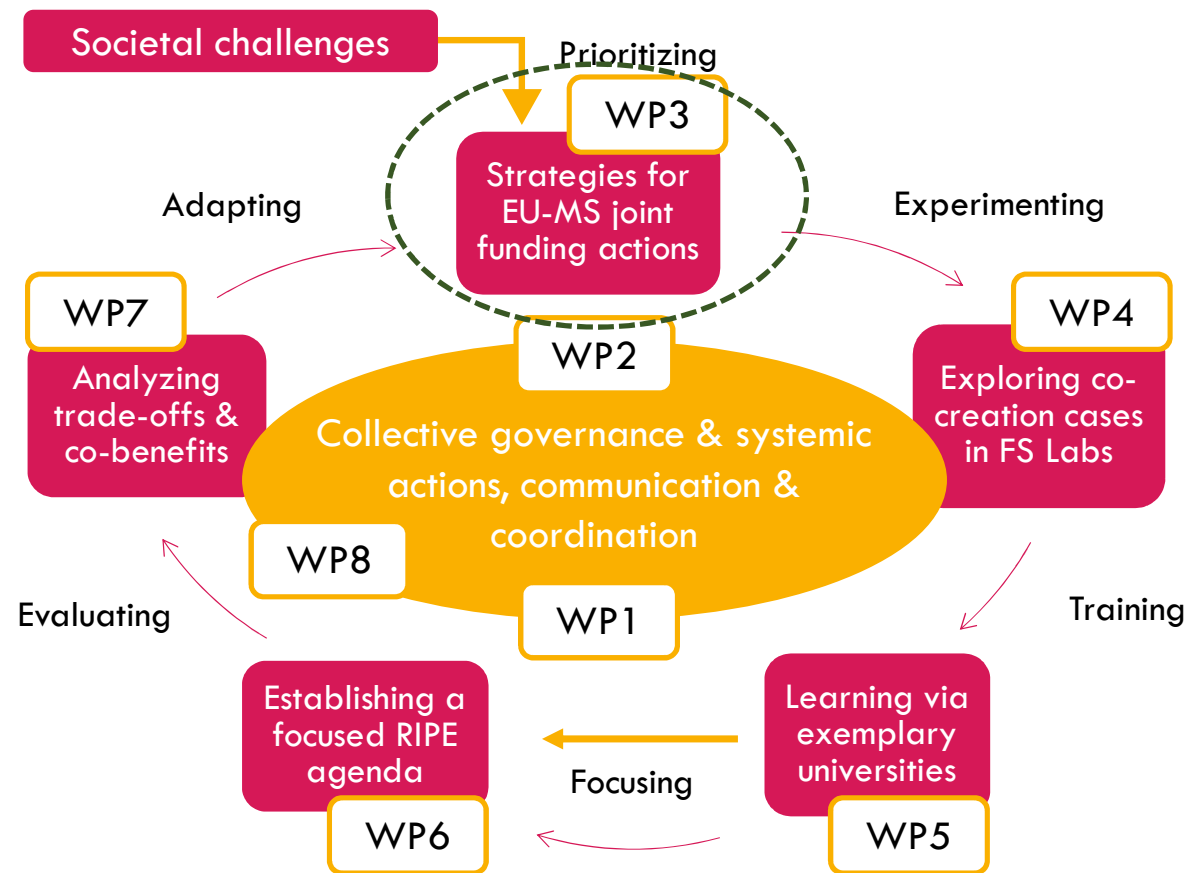


➤ converge towards its governance model

Key elements elaborated in WP's



Please note that the CSA functions as a system itself



First mappings revealed interesting insights >>> to be fed back to funding strategies

Work in progress

**Thank you very much for your attention
and let's hope that we jointly reach SFS!**

hugo.de-vries@inrae.fr

food|paths



Funded by
the European Union